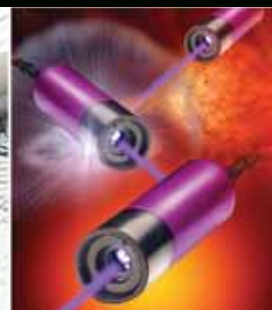




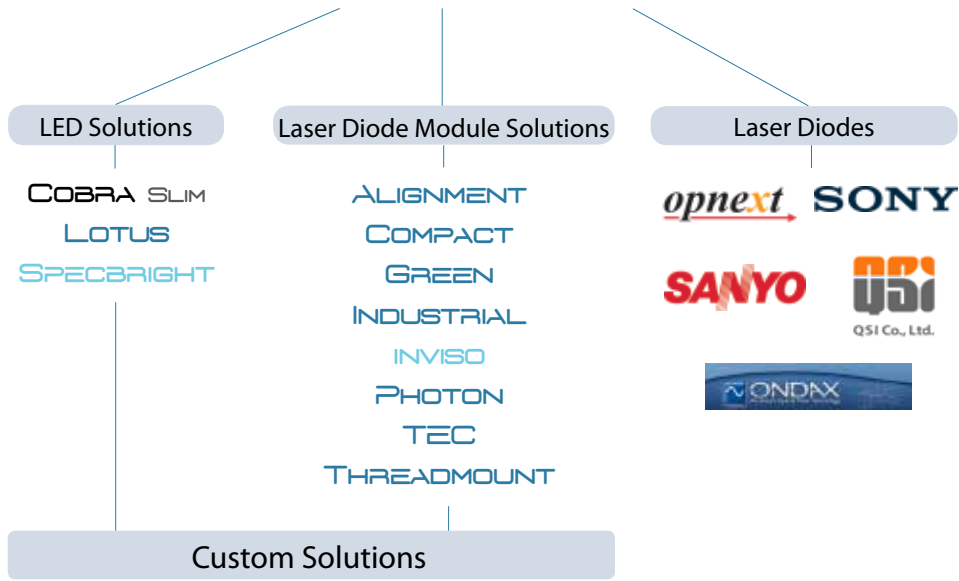
PROPHOTONIX

Product Overview



Company Overview

ProPhotonix designs and manufactures LED illumination solutions and laser diode modules used in a diverse range of industries such as the solar, semi-conductor and medical markets. In addition, we distribute laser diodes from key industry leaders like Opnext, Sony, QSI, Sanyo and Ondax.



Company Overview

Since its foundation, ProPhotonix has demonstrated its ability to create and deliver products for highly demanding applications. This agile development coupled with our extensive manufacturing “know-how” sets us apart from our competitors.

LED operations are headquartered in Cork, Ireland. Here we have developed extensive expertise in the selection and design of thermally efficient substrates, the optical design of lens and diffuser systems, the design of cooling systems for extremely high power illuminators and the science of LED lifetimes.

Hertfordshire, UK, the center of excellence for our laser operations, is where we manufacture custom designed laser modules and laser assemblies and distribute a wide range of laser diodes from leading manufacturers.



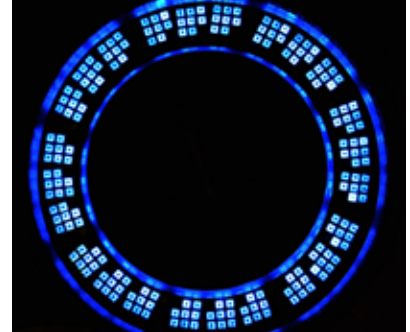
For More Information Visit www.prophotonix.com

Custom and OEM LED Solutions

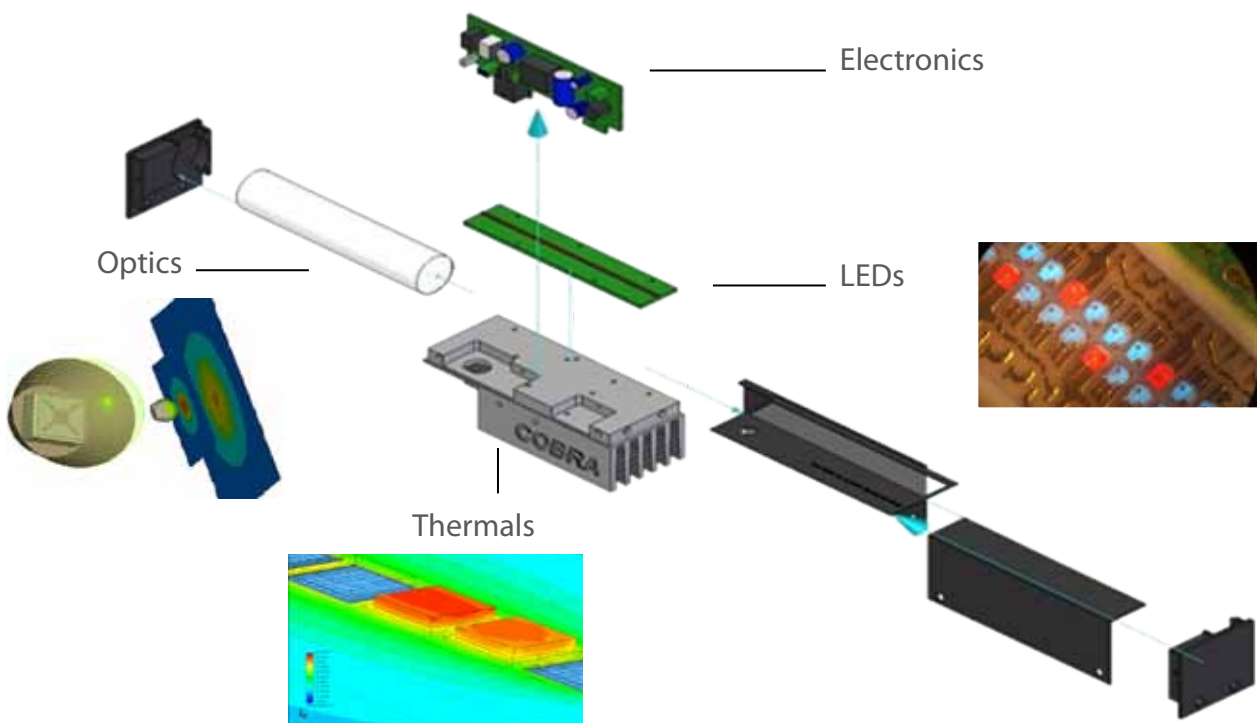
ProPhotonix designs and manufactures custom LED illuminators for OEM customers across a wide range of industries including machine vision, medical and security. For over 15 years ProPhotonix has worked closely with customers to design solutions for their specific application needs.

ProPhotonix has unique expertise and experience in:

- Electronic control of LEDs
- On-board electronics such as strobing, temperature control and optical output monitoring
- Optical design
- Mechanical design of unique LED assemblies
- Thermally efficient substrates
- Characterization, measurement
- Science of LED lifetime
- IP and NEMA compatibility
- Cooling systems for extremely high power devices



Custom Solutions



For More Information Visit www.prophotonix.com

COBRA SLIM - Linescan Illuminator



Crystal Clear Line Scan Images

Key Features

- Design: Slim and compact
- Field adjustable: focusing distance and diffusers
- Chip-on-Board: Extreme brightness and high uniformity
- Modular: available in any length
- Wavelengths: from UV to Visible and IR

Key Applications

Web and Linescan inspection of

- Foil
- Paper
- Plastic
- Glass
- Semiconductor

Options Available

- Strobing function
(Potential for 5 times brighter)
- Onboard Ethernet control

Linescan Illumination

LOTUS - LED Linelight



LED Alternative to Fluorescent Lighting

Key Features

- 5 year lifetime with maintenance free operation
- Stable color temperature and intensity over the lifetime of the product
- High energy efficiency, with integrated intensity control
- Stable and uniform factory-set light output
- Integrated optics for increased intensity and extended working distance
- Robust, compact mechanical design with IP65 enclosure
- Available in a range of Wavelengths
- Any length available up to 5 metres, in 100mm increments

Key Applications

- Web Inspection
- Linescan Inspection

SPECBRIGHT™

Extremely Bright LED Illumination for the Most Demanding Applications



Vision Illumination

Chip-On-Board

ProPhotonix employs “chip-on-board” technology in its design and manufacturing process of creating LED solutions. What this means is that the chips are placed in contact with a custom-designed, thermally efficient substrate structure.

Advantages of chip-on-board technology:

- Compactness
- High intensity due to tight packing density
- High uniformity, even at close working distances
- Efficient heat dissipation

Custom Laser Solutions

Custom Laser Solutions

Today's specialized applications often require very detailed and exacting specifications that may not be available from off-the-shelf solutions. At ProPhotonix we leverage the expertise of our in-house optical, electronic and mechanical engineers to help define and specify your requirements ensuring that you receive the ideal solution to your problem.

We design and build new modules on-site, test prototypes to verify power output, stability, and bore sighting. Our goal is to deliver the most precise, efficient and cost-effective product for your application.

Our Capabilities include:

- Fibre pigtailed or receptacles
- Custom housing designs
- Customized optics
- Rugged designs
- Custom electrical connections and sockets
- Custom electronic design



For More Information Visit www.prophotonix.com

INDUSTRIAL- Laser Diode Modules



Key Features

- Elliptical beam, line & cross generating optics available
- Robust, reliable and compact design
- Excellent bore-sighting <math><0.25^\circ</math>
- Scratch-resistant sapphire window protects lens
- Available in wavelengths from 635nm to 830nm
- Output powers from 0.9mW to 30mW

Key Applications

- Industrial Alignment
- Industrial Positioning
- Guidance Systems

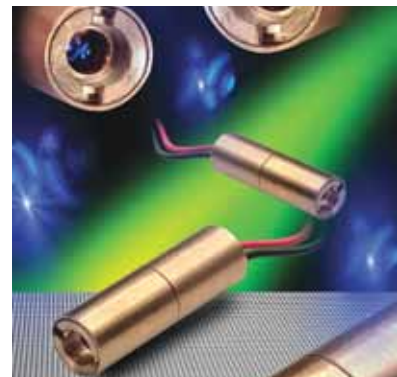
Key Features

- Elliptical beam, line & cross generating optics available
- Compact design
- High reliability
- Wavelengths: 635nm and 650nm
- Output powers from 0.9mW to 4mW
- Hard anodized aluminium housing for electrical isolation available.

COMPACT- Laser Diode Modules

Key Applications

- Industrial Alignment
- Patient Positioning
- Laser Pointers
- Light Scattering



PHOTON - Laser Diode Modules



Key Features

- Elliptical and circular beam, line generating optics available
- Compact & self contained design
- High reliability
- Adjustable optics
- Available in wavelengths from 405nm to 850nm
- Output powers from 0.9mW to 85mW
- CW or TTL modulation options
- Optional 25mm mounting flange available

Key Applications

- Industrial Alignment
- Fluorescence
- Sensors
- Low Level Laser Therapy
- Spectroscopy
- Particle Measurement

INVISO

The Next Generation of Machine Vision Laser

New



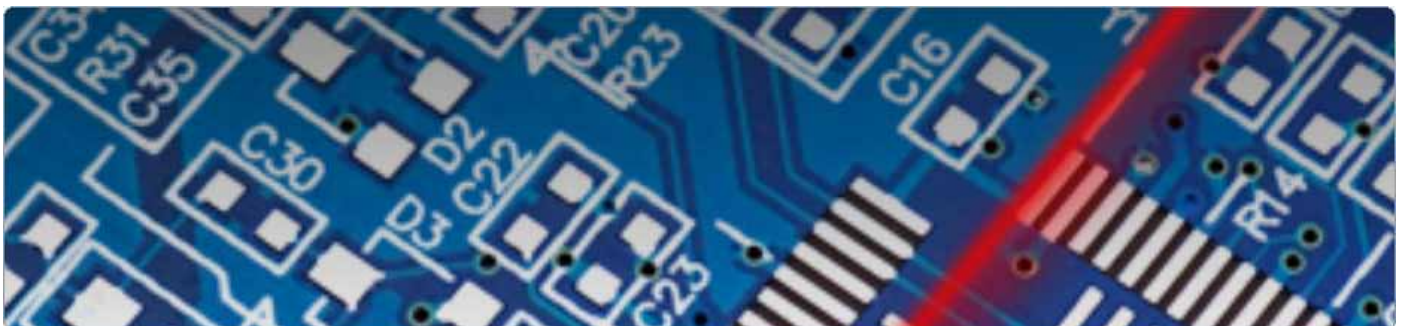
InViso - Easy Mounting, Instant Alignment.

Key Features

- Flat mounting surface for instant beam alignment
- Easy externally adjustable focus with locking feature
- Excellent uniformity
- Line width of 30µm at 120mm
- A range of wavelengths and power options are available

Key Applications

- 3D measurement
- High speed sorting & classification
- High precision alignment
- Automated inspection



For More Information Visit www.prophotonix.com

GREEN DPSS- Laser Diode Modules-532nm



- Key Features**
- Circular beam profile
 - High reliability
 - Compact, self-contained design
 - Visible Light $\lambda = 532\text{nm}$
 - 5mW & 10mW powers available

- Key Applications**
- Medical Alignment
 - Industrial Alignment
 - Scientific Equipment

LASER ALIGNMENT SYSTEM

- Key Features**
- 658nm laser alignment system
 - Interchangeable optic heads
 - Pre-aligned optics - no user adjustment required
 - Protective glass window
 - User adjustable laser intensity
 - 14mm diameter housing
 - 2.1mm jack connector for easy installation and replacement



Laser Diode Modules

TEC -Laser Diode Modules



- Key Features**
- Elliptical beam
 - Circular beam
 - Protective glass window
 - Exceptional wavelength & power stability
 - Active temperature control
 - Increased laser diode lifetime
 - User adjustable optics

- Key Applications**
- Machine Vision
 - Industrial Inspection
 - Alignment
 - Medical Instrumentation

LASER DIODE COLLIMATORS



Key Features

- A Laser Assembly including pre-fitted laser diodes and collimating optics
- Elliptical output beam
- Visible and NIR wavelengths available
- Collimated or focused beam
- Output power up to 5mW
- High bore-sighting accuracy available

Key Applications

- Industrial and Automotive Alignment
- Positioning & Sensing
- Targeting Applications

THREADMOUNT

- Laser Diode Modules

Key Features

- Complete laser diode system
- High reliability
- Available in wavelengths from 635nm to 670nm
- Circular output beam

Key Applications

- Industrial Alignment & Positioning
- Automotive Alignment
- Construction Industry



FIBRE PIGTAILED & RECEPTACLE LASER DIODES



We offer a range of options for fibre coupling laser diodes with pigtails and receptacles with single mode, 9µm and 50µm fibres and FC, SMA, ST, SC and universal connector

LASER DIODES

ProPhotonix distributes laser diodes from five leading manufacturers:

SONY



opnext

SANYO

Laser Diodes

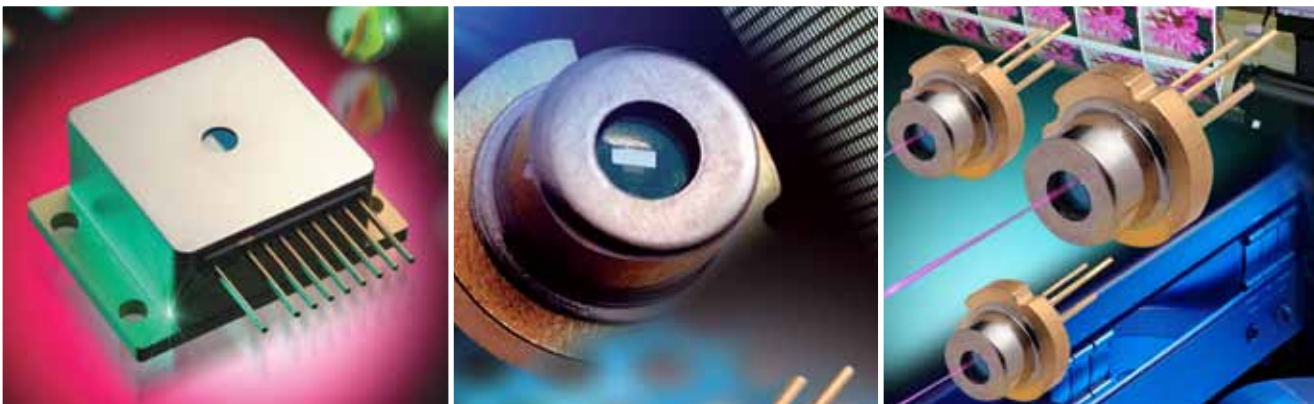
With over 15 years experience in laser diodes ProPhotonix offers:

- Technical support to help you to select the right laser diode and get the most from your application
- A wide range of diodes in stock and scheduled shipments to meet your requirements
- Excellent value due to the strength of our relationships with manufacturers
- Support on other parts of your system including optics, drive electronics and complete laser modules

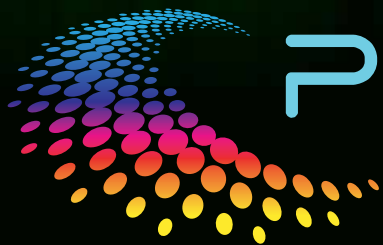
We can offer a range of laser diodes to suit a number of applications with properties:

- Wavelengths: 405 to 910nm
- Power: 5mW to 6W
- Operating Temperatures to 70°C

Whatever your laser diode requirements, ProPhotonix can help you find the solution you need.



For More Information Visit www.prophotonix.com



PROPHOTONIX

Corporate

32 Hampshire Road
Salem, NH 03079
sales@prophotonix.com
Tel: +1 603-893-8778
Fax: +1 603-898-8851

LED Solutions

3020 Euro Business Park, Little Island
Cork, Ireland
sales@prophotonix.com
Tel: +353-21-5001313
Fax: +353-21-4297749

Laser Solutions

Sparrow Lane, Hatfield Broad Oak
Hertfordshire, CM22 7BA, UK
sales@prophotonix.com
Tel: +44-1279-717170
Fax: +44-1279-717171

ProPhotonix and the ProPhotonix logo are trademarks of ProPhotonix, Inc. All other brand and product names are trademarks or registered trademarks of their respective holders. Copyright © May 2010 ProPhotonix, Inc. Printed in the USA. All rights reserved.



Visit us on the Web: www.prophotonix.com